

**CZ0201 防爆开关模块**
**● 主要数据 Main technical data:**

认证 Certification | 防爆标志 Ex mark | 符合标准 Meet the standard

China (PCEC Ex)	Ex de II C	GB3836	GB12476
IECEX	Ex de II C	IEC60079	
ATEX	II 2GD Ex de II C	EN60079	

适用范围: 用于 1 区和 2 区

使用环境温度: -40°C to +55°C

工作温度: -40°C..+90°C

防护等级: IP20

额定电压:	250V	250V	110V	24V
使用类别:	AC12	AC15	DC13	DC13
额定电流:	16A	10A	0.5A	1A
环境温度:	Ta < 40°C	Ta < 60°C	Ta < 60°C	Ta < 60°C
接线端子:	2 × 2.5mm <sup>2</sup>			
机械寿命:	100 万次			
板前导轨型安装:	导轨 TS35 × 7.5 或螺钉固定			
板后型安装:	在 1-6mm 面板上			
符合:	CE 0575			

**CZ0201 Explosion-proof switch module**

Intended use: Can be used in zone 1 and zone 2

Ambient temperature use: -40°C to +55°C

Operating temperature: -40°C..+90°C

Degree of protection: IP20

Rated voltage:	250V	250V	110V	24V
Regimentation use:	AC12	AC15	DC13	DC13
Rated current:	16A	10A	0.5A	1A
Ambient temperature:	Ta < 40°C	Ta < 60°C	Ta < 60°C	Ta < 60°C
Terminals:	2 × 2.5mm <sup>2</sup>			
Mechanical life:	100, 0000 times			
Board front mounting rail type mounting:	May be held on mounting rails TS35 × 7.5 or with screws			
Board back type mounting:	On 1-6mm panel			
Conformity to:	CE 0575			

**P□/K□/L□/...系列操作头**
**● 主要数据 Main technical data:**

认证 Certification | 防爆标志 Ex mark | 符合标准 Meet the standard

China (PCEC Ex)	Ex e II	GB3836	GB12476
IECEX	Ex e II Ex tD A21	IEC60079	
ATEX	II 2GD Ex e II Ex tD A21	EN60079	

适用范围: 用于 1 区和 2 区, 21 区和 22 区

使用环境温度: -40°C &lt; Ta &lt; 55°C

防护等级: IP66

材料: 聚酰胺

符合: CE 0575

**P□/K□/L□/...Series operation head**

Intended use: Can be used in zone 1 and zone 2

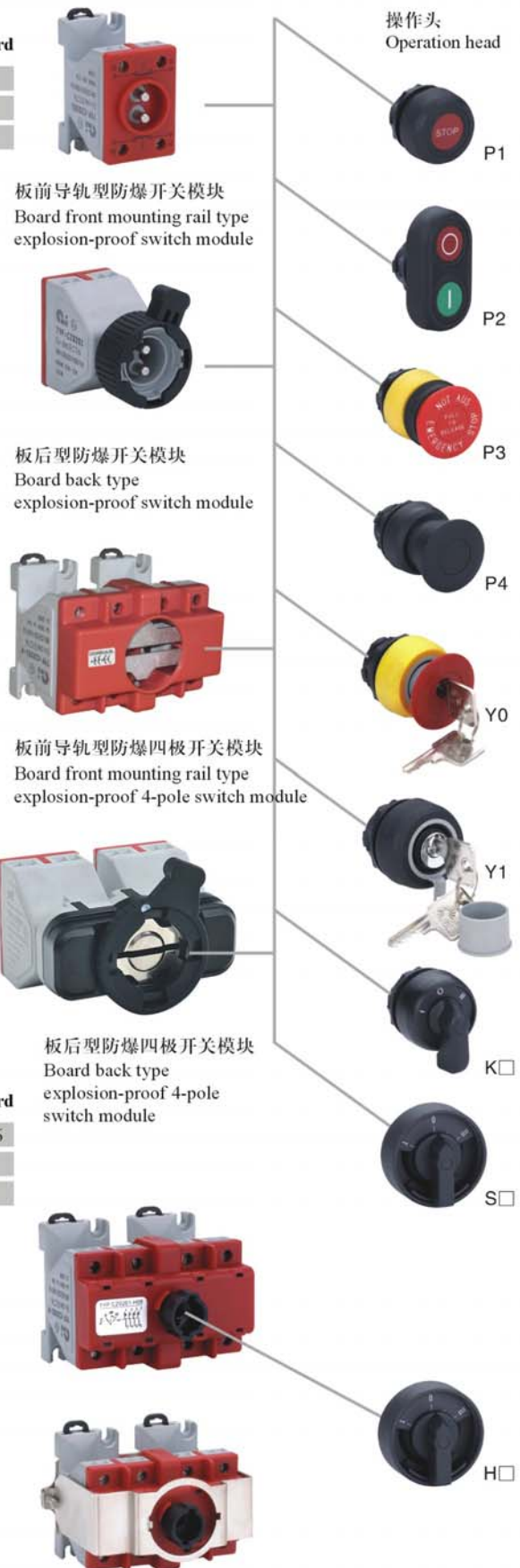
Can be used in zone 21 and zone 22

Ambient temperature use: -40°C &lt; Ta &lt; 55°C

Degree of protection: IP66

Material: polyamide

Conformity to: CE 0575



## • 订购规格 Order specifications:

图样 Illustration	结构形式 Construction type	型号 Type	按钮触点 Button contact	订购号(编码) Order No.(Code)
	板前导轨型 Board front mounting rail type	P1 橡胶按钮 P1 Rubber sheath button	11 23 / 12 24 INC/INO	P1 60 □□
			11 21 / 12 22 2NC	P1 61 □□
			13 23 / 14 24 2NO	P1 62 □□
	板后型 Board back type		11 23 / 12 24 INC/INO	P1 70 □□
			11 21 / 12 22 2NC	P1 71 □□
			13 23 / 14 24 2NO	P1 72 □□
	板前导轨型 Board front mounting rail type	P2 橡胶双按钮 P2 Rubber sheath double button	11 23 / 12 24 INC/INO	P2 60 □□ / □□
			11 21 / 12 22 2NC	P2 61 □□ / □□
			13 23 / 14 24 2NO	P2 62 □□ / □□
	板后型 Board back type		11 23 / 12 24 INC/INO	P2 70 □□ / □□
			11 21 / 12 22 2NC	P2 71 □□ / □□
			13 23 / 14 24 2NO	P2 72 □□ / □□

**A**

## • 标识牌 Label:

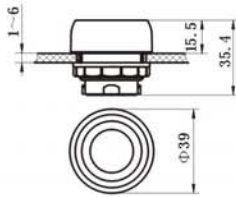
代号 Code	标识刻字 Engraved words in the label	标识牌颜色 Colour of label	刻字颜色 Colour of engraved words
01	空白 Blank	绿色 Green	
02	I	绿色 Green	白色 white
03	ON	绿色 Green	白色 white
04	START	绿色 Green	白色 white
21	空白 Blank	红色 red	
22	O	红色 red	白色 white
23	OFF	红色 red	白色 white
24	STOP	红色 red	白色 white
41	空白 Blank	白色 white	
42	II	白色 white	黑色 black
43	↑	白色 white	黑色 black
44	起动 Start	白色 white	黑色 black
45	停止 Stop	白色 white	红色 red
46	正 FW	白色 white	黑色 black
47	反 BW	白色 white	黑色 black
48	停 Stop	白色 white	红色 red
49	↑↑	白色 white	黑色 black
61	空白 Blank	黄色 yellow	
62	II	黄色 yellow	白色 white
81	空白 Blank	黑色 black	



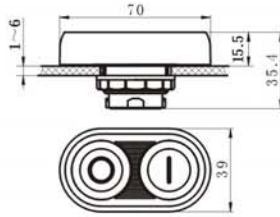
**• 订购规格 Order specifications:**

图样 Illustration	结构形式 Construction type	型号 Type	按钮触点 Button contact	订购号(编码) Order No.(Code)
	板前导轨型 Board front mounting rail type	P3 急停自锁按钮 P3 Emergency self-locking button	11 23 12 24	P3 60
			11 21 12 22	P3 61
			13 23 14 24	P3 62
	板后型 Board back type		11 23 12 24	P3 70
			11 21 12 22	P3 71
			13 23 14 24	P3 72
	板前导轨型 Board front mounting rail type	P4 黑色蘑菇头按钮 P4 Black mushroom head button	11 23 12 24	P4 60□□
			11 21 12 22	P4 61□□
			13 23 14 24	P4 62□□
	板后型 Board back type		11 23 12 24	P4 70□□
			11 21 12 22	P4 71□□
			13 23 14 24	P4 72□□
	板前导轨型 Board front mounting rail type	Y0 带钥匙红色蘑菇头按钮 Y0 Red mushroom button with key	11 23 12 24	Y0 60
			11 21 12 22	Y0 61
			13 23 14 24	Y0 62
	板后型 Board back type		11 23 12 24	Y0 70
			11 21 12 22	Y0 71
			13 23 14 24	Y0 72
	板前导轨型 Board front mounting rail type	Y1 带钥匙按钮 Y1 Button with key	11 23 12 24	Y1 60
			11 21 12 22	Y1 61
			13 23 14 24	Y1 62
	板后型 Board back type		11 23 12 24	Y1 70
			11 21 12 22	Y1 71
			13 23 14 24	Y1 72

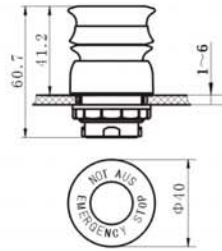
**A**

**• 外形尺寸 Outline dimensions:**


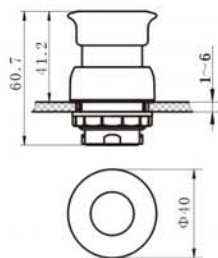
**P1 橡胶套按钮操作头**  
P1 Operation head of rubber sheath button



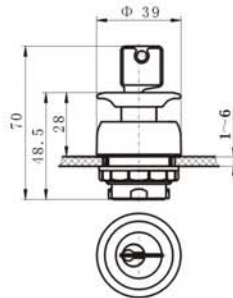
**P2 橡胶套双按钮操作头**  
P2 Operation head of rubber sheath double button



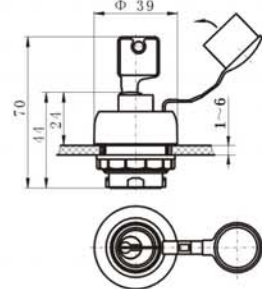
**P3 急停自锁按钮操作头**  
P3 Operation head of emergency self-locking button



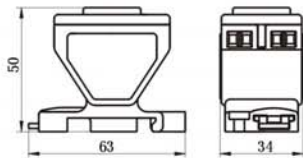
**P4 黑色蘑菇头按钮操作头**  
P4 Operation head of black mushroom head button



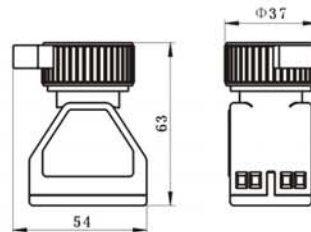
**Y0 带钥匙红色蘑菇头按钮操作头**  
Y0 Operation head of red mushroom button with key



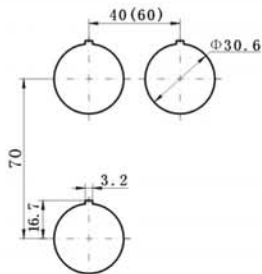
**Y1 带钥匙按钮操作头**  
Y1 Operation head of button with key



**CZ0201 板前导轨型防爆开关模块**  
CZ0201 Broad front mounting rail type explosion-proof switch module



**CZ0201 板后型防爆开关模块**  
CZ0201 Board back type explosion-proof switch module

**• 安装间距 Mounting pitches:**

**• 板后型配操作头外形尺寸**

Outline dimensions of board back type with operation head

